



creatif

- 2 hours from London by train (1 hour 45 minutes by 2018)
- 1.6m people within a 45 minute commute
- 70,000 students studying within the Region
- A 4G City with excellent penetration of superfast broadband
- Cardiff Airport is 30 minutes from the city centre

Skim - Gliding Panels

Operation & Maintenance Manual

www.creatif.org.uk



02_Contents

Thank you for choosing Skim by Creatif - our versatile gliding panel system.

This guide is designed to walk you through how to use Skim.

For technical drawings, please contact Creatif.

Page 03-04	Operation Guide
Page 05	Cleaning & Maintenance
Page 06	Fabric Care
Page 07	Contact

Servicing

Do you have a problem with your moving wall system or do you want to ask a question?

Email: service@creatif.org.uk

Guarantees

All materials were supplied by, or on behalf of, Creatif and manufactured in our factory.

All materials are guaranteed for 12 months from the date of installation, with the exception of component failure caused as a result of misuse or neglect.

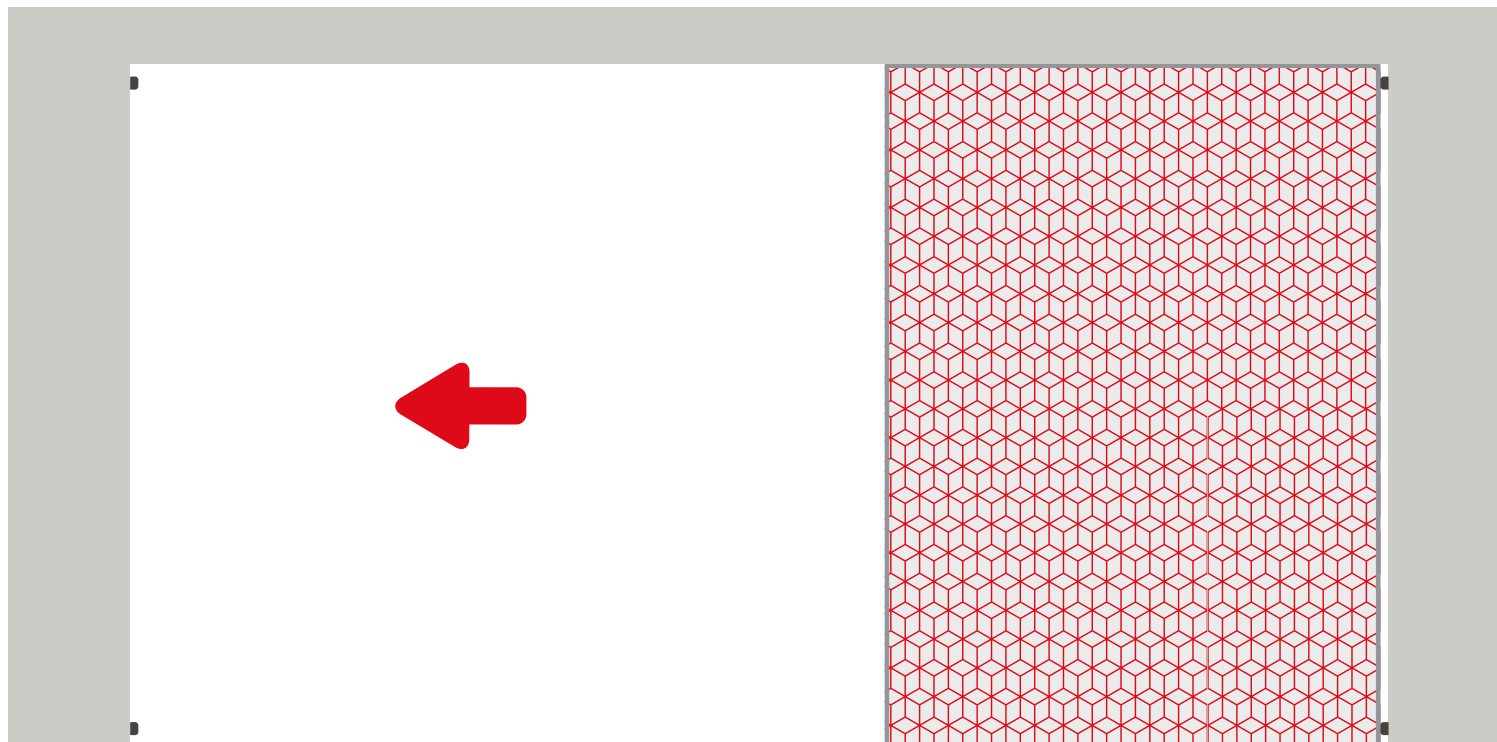
03_Operation Guide 1 of 2

In terms of operation, Skim is an extremely quick and simple system to use, largely due to its lightweight components.

This guide assumes Skim is in the closed position. If your system is in the closed position, simply perform the following steps in reverse order.

Step 1

Skim is so lightweight that no handles are required to move the individual panels. Instead, simply guide the panel along the ceiling track from its closed position towards the desired parking location.



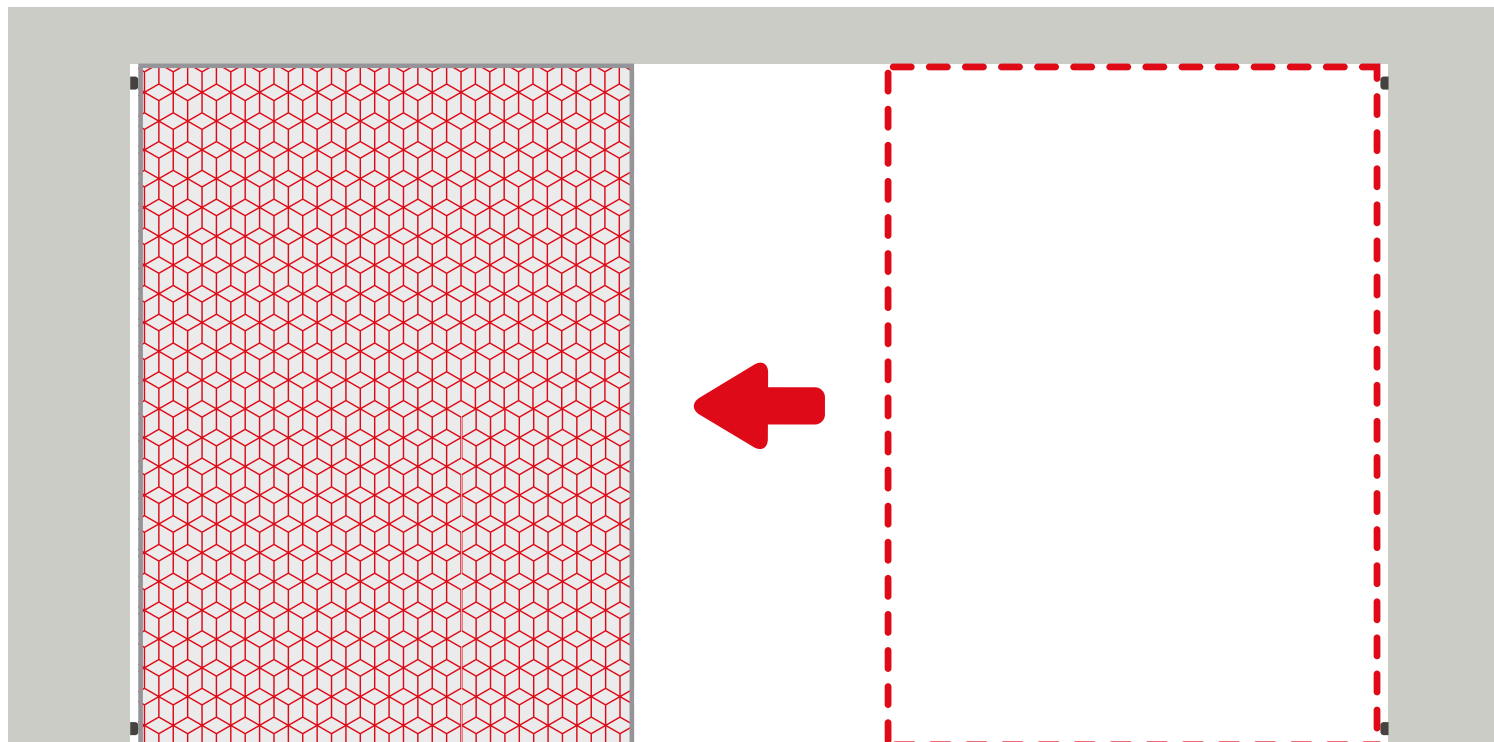
04_Operation Guide 2 of 2

Step 2

As the panel approaches its desired parking bay, reduce the speed at which it is travelling.

The two rubber stoppers attached to your fixed wall will give you a gentle resistance when the panel has reached its destination - avoid harsh collisions to reduce risk of unnecessary damage.

Please note that not all Skim systems come with rubber stoppers – this is dependent on the customer's needs. If this is the case with your Skim system, your skirting board will do the same job.



05_Cleaning & Maintenance

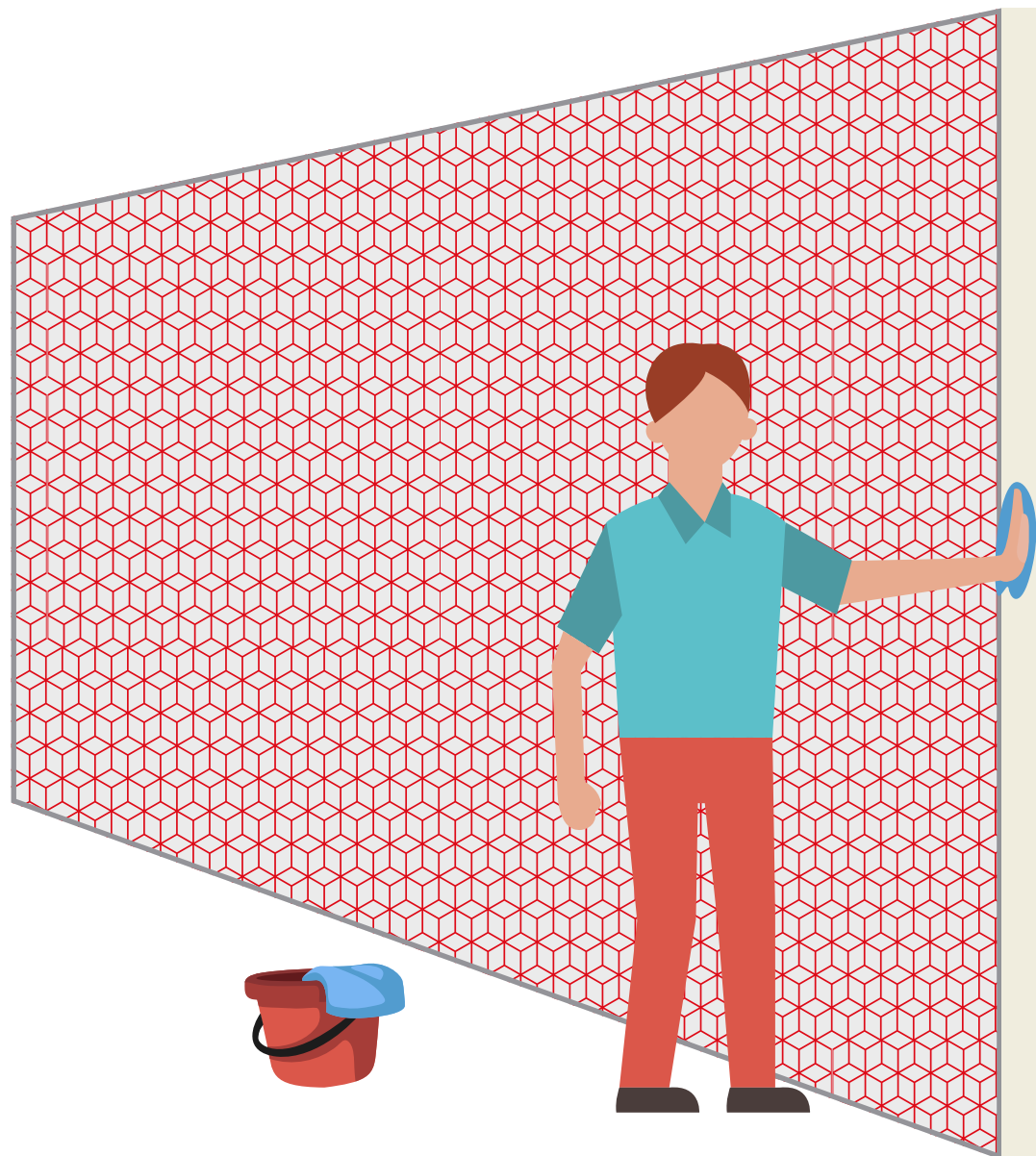
Skim requires very little attention, with the obvious exception of keeping the track free of dirt and objects.

For board panels, we recommended using a damp cloth and then wiping down with a dry cloth immediately after.

To clean a Skim system with a fabric-covered panels, please see the following page.

For more information on a service contract, system usage or to activate your warranty, give us a call or send an email:

service@creatif.org.uk



07_Fabric Care

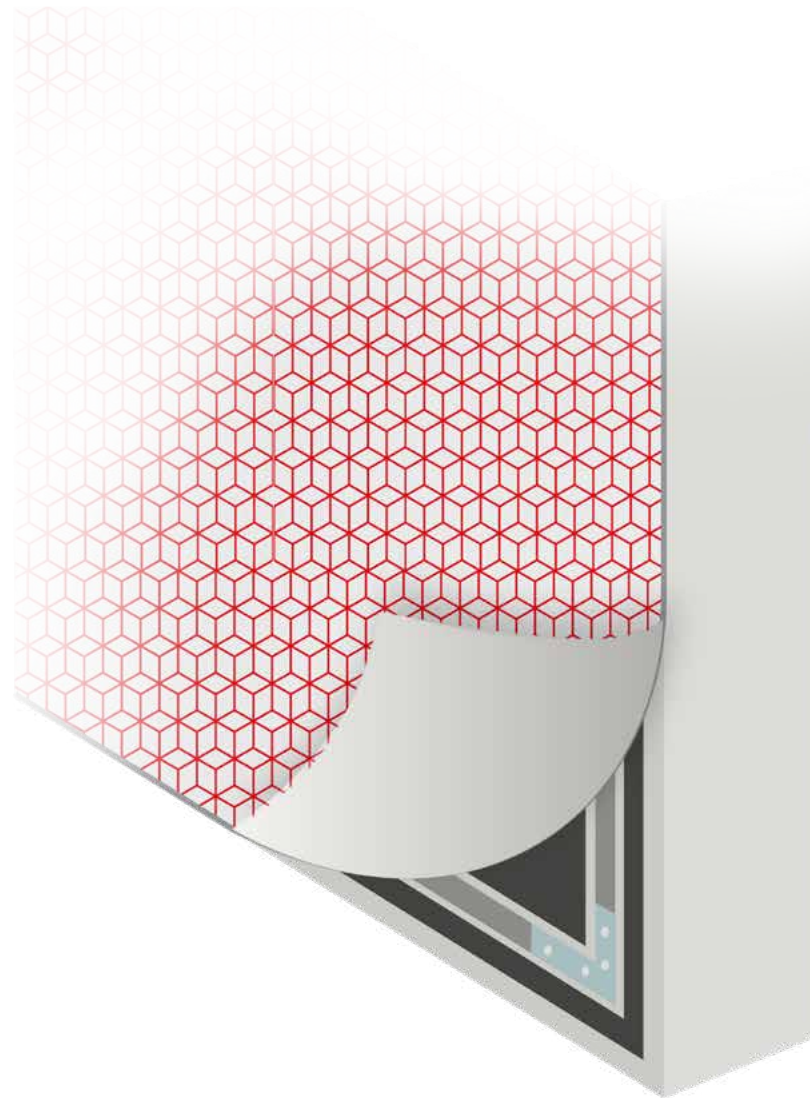
Skim's fabric can be printed in any colour, with any graphic or design/logo.

The fabric is also replaceable - it can be peeled off, rolled up, stored away and even put in the washing machine (subject to type).

Removing the fabric is simple. Locate the plastic tab attached (normally found on one of the corners) and simply pull the cover from its frame. To replace, just push the plastic beading back into the frame.

Want to discuss printed fabric options? Give us a call or send an email:

service@creatif.org.uk



08_Contact

If you have any questions about your moving wall system, or would like to find out more about our servicing packages, please get in touch:

T: +44 (0) 113 270 1239

E: service@creatif.org.uk

www.creatif.org.uk



**Do you have
a question?**

Want to discuss
servicing options?

Get in touch!